



# RFX3 Polyclonal Antibody

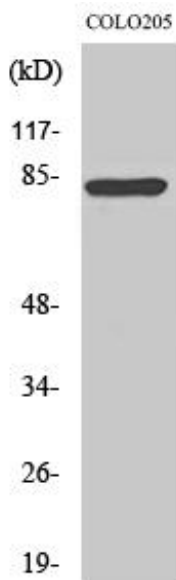
<b>Catalog No</b>	YP-Ab-01980
<b>Isotype</b>	IgG
<b>Reactivity</b>	Human;Mouse
<b>Applications</b>	WB;IHC;IF;ELISA
<b>Gene Name</b>	RFX3
<b>Protein Name</b>	Transcription factor RFX3
<b>Immunogen</b>	The antiserum was produced against synthesized peptide derived from human RFX3. AA range:641-690
<b>Specificity</b>	RFX3 Polyclonal Antibody detects endogenous levels of RFX3 protein.
<b>Formulation</b>	Liquid in PBS containing 50% glycerol, 0.5% BSA and 0.02% sodium azide.
<b>Source</b>	Polyclonal, Rabbit,IgG
<b>Purification</b>	The antibody was affinity-purified from rabbit antiserum by affinity-chromatography using epitope-specific immunogen.
<b>Dilution</b>	WB: 1/500 - 1/2000. IHC: 1/100 - 1/300. ELISA: 1/40000.. IF 1:50-200
<b>Concentration</b>	1 mg/ml
<b>Purity</b>	≥90%
<b>Storage Stability</b>	-20°C/1 year
<b>Synonyms</b>	RFX3; Transcription factor RFX3; Regulatory factor X 3
<b>Observed Band</b>	84kD
<b>Cell Pathway</b>	Nucleus .
<b>Tissue Specificity</b>	Muscle,Testis,
<b>Function</b>	function:Acts as a transcription factor. Represses transcription of MAP1A in non-neuronal cells but not in neuronal cells.,similarity:Belongs to the RFX family.,
<b>Background</b>	This gene is a member of the regulatory factor X gene family, which encodes transcription factors that contain a highly-conserved winged helix DNA binding domain. The protein encoded by this gene is structurally related to regulatory factors X1, X2, X4, and X5. It is a transcriptional activator that can bind DNA as a monomer or as a heterodimer with other RFX family members. Multiple transcript variants encoding different isoforms have been described for this gene. [provided by RefSeq, Aug 2013],
<b>matters needing attention</b>	Avoid repeated freezing and thawing!



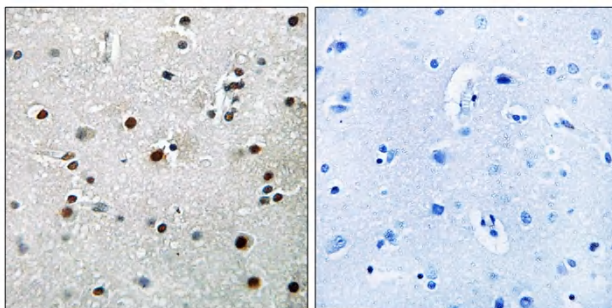
**Usage suggestions**

This product can be used in immunological reaction related experiments. For more information, please consult technical personnel.

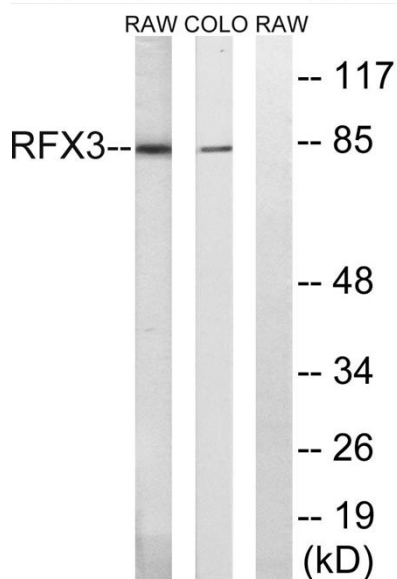
**Products Images**



Western Blot analysis of various cells using RFX3 Polyclonal Antibody cells nucleus extracted by Minute TM Cytoplasmic and Nuclear Fractionation kit (SC-003, Inventbiotech, MN, USA).



Immunohistochemistry analysis of paraffin-embedded human brain tissue, using RFX3 Antibody. The picture on the right is blocked with the synthesized peptide.



Western blot analysis of lysates from COLO and RAW264.7 cells, using RFX3 Antibody. The lane on the right is blocked with the synthesized peptide.